



KLAUER

Infinitely Reliable.



ALUMINUM SOFFIT AND FASCIA
AND ACCESSORIES

ALUMINUM SOFFIT AND FASCIA

AND ACCESSORIES

WWW.KLAUER.COM

CONTENTS

ALUMINUM SOFFIT AND FASCIA AND ACCESSORIES

› Aluminum Soffit Panels	4
› Aluminum Soffit J and F Channel and Miter Divider	5
› Aluminum Trim Coil	6
› Aluminum Fascia	6
› Steel Fascia	7
› Trim Nails	7
› Aluminum Soffit and Fascia Collection	8

OPTIONS FOR EVERYONE

Serving the residential and light commercial markets, our durable, energy-efficient products are easy to install, require minimal maintenance and come in styles and colors to fit any project design.

THE KLAUER ADVANTAGES



EASY INSTALLATION



MAINTENANCE FREE



DURABLE



ENERGY EFFICIENT



PRECISION ENGINEERED



ADD BEAUTY AND
VALUE TO YOUR HOME

QUALITY AND EXCELLENCE, REINVENTED

SOFFIT AND FASCIA

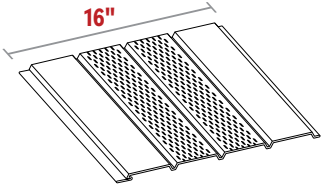
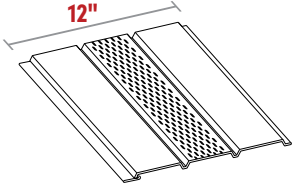
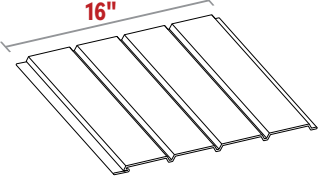

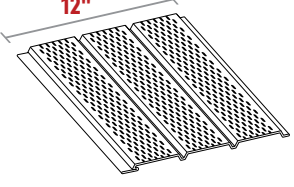
Klauer entered the aluminum soffit-manufacturing market with the goal of providing the highest-quality soffit and accessories available. Our paint is durable and tough, environmentally friendly, 100-percent recyclable and resistant to surface stains from the elements. Fascia is available in both aluminum and steel.



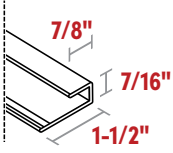
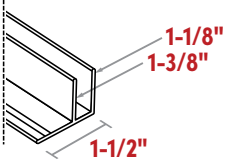
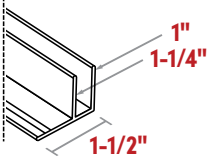
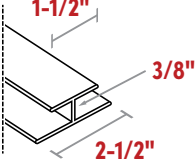
LIMITED- LIFETIME WARRANTY!

*Quality products backed
by excellent support.*


ALUMINUM SOFFIT PANELS

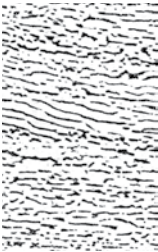
	PART NUMBER	PRODUCT DESCRIPTION	PACKAGING AND SPECIFICATIONS
	48350	16" Center-Vent Soffit Panel – 12' (free airspace: 6.48 sq. in./lin. ft.)	12 pcs./ctn. 4.44 lbs.
	48320	12" Center-Vent Soffit Panel – 12' (free airspace: 3.24 sq. in./lin. ft.)	16 pcs./ctn. 3.48 lbs.
	48330	16" Solid Soffit Panel – 12'	12 pcs./ctn. 4.44 lbs.
	48300	12" Solid Soffit Panel – 12'	16 pcs./ctn. 3.48 lbs.
	48340	16" Full-Vent Soffit Panel – 12' (free airspace: 12.96 sq. in./lin. ft.)	12 pcs./ctn. 4.44 lbs.
	48310	12" Full-Vent Soffit Panel – 12' (free airspace: 9.72 sq. in./lin. ft.)	16 pcs./ctn. 3.48 lbs.

ALUMINUM SOFFIT J AND F CHANNEL AND MITER DIVIDER

	PART NUMBER	PRODUCT DESCRIPTION	PACKAGING AND SPECIFICATIONS
	48600	J Channel	12 ft. length 300 linear ft./ctn. 25 pcs./ctn. 18 lbs. .72 lbs./pc.
	48610	F Channel Soffit Starter Strip	12 ft. length 300 linear ft./ctn. 25 pcs./ctn. 36 lbs. 1.44 lbs./pc.
	48611	Universal F Channel Soffit Starter Strip	12 ft. length 300 linear ft./ctn. 25 pcs./ctn. 36 lbs. 1.44 lbs./pc.
	89680	Miter Divider	10 ft. length 100 linear ft./ctn. 10 pcs./ctn. 13.2 lbs. 1.32 lbs./pc.

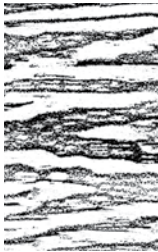
ALUMINUM TRIM COIL

	PART NUMBER	PRODUCT DESCRIPTION	PACKAGING AND SPECIFICATIONS
	30232	24" Trim Coil – 50' Roll	1/ctn. 24 lbs.
	30231	24" Trim Coil – 50' Roll Woodgrain Embossed	1/ctn. 24 lbs.



NORTHERN CEDAR
EMBOSSING PATTERN

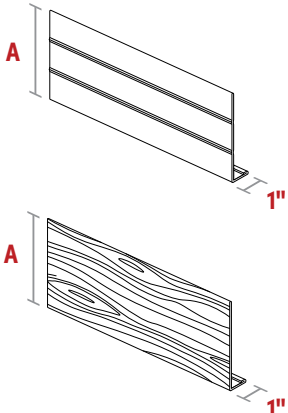
- ALUMINUM SIDING ACCESSORIES
- ALUMINUM TRIM COIL (SEE ABOVE)



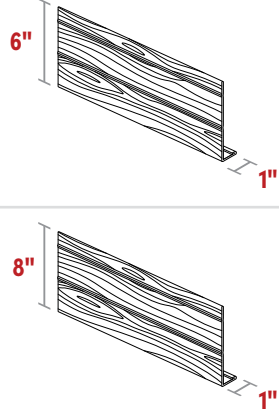
CYPRESS
EMBOSSING PATTERN

- STEEL FASCIA
- ALUMINUM FASCIA (SEE BELOW)

ALUMINUM FASCIA

	PART NUMBER	PRODUCT DESCRIPTION	PACKAGING AND SPECIFICATIONS	DIMENSIONS A
	48490	6" Fascia (.024) Smooth Fascia Cover – 12'	25 pcs./ctn. 1.80 lbs.	5-5/8"
	48500	8" Fascia (.024) Smooth Fascia Cover – 12'	25 pcs./ctn. 2.64 lbs.	7-5/8"
	48560	6" Fascia (.024) Woodgrain Fascia Cover – 12'	25 pcs./ctn. 1.80 lbs.	5-5/8"
	48570	8" Fascia (.024) Woodgrain Fascia Cover – 12'	25 pcs./ctn. 2.64 lbs.	7-5/8"

STEEL FASCIA

	PART NUMBER	PRODUCT DESCRIPTION	PACKAGING AND SPECIFICATIONS
	57010	6" Steel Woodgrain Fascia	12 ft. length 120 linear ft./ctn. 10 pcs./ctn. 48 lbs. 4.8 lbs./pc.
	57020	8" Steel Woodgrain Fascia	12 ft. length 120 linear ft./ctn. 10 pcs./ctn. 60 lbs. 6.0 lbs./pc.

TRIM NAILS

	PART NUMBER	PRODUCT DESCRIPTION	PACKAGING AND SPECIFICATIONS
	48650	1-1/4" Stainless-Steel Trim Nail	1 lb./ctn.

ALUMINUM SOFFIT AND FASCIA COLLECTION

Klauer utilizes a proprietary, durable paint system available in a textured or smooth finish and a wide range of colors. Center vent, full vent and solid soffit panels are available in standard 12-in. and 16-in. widths. Fascia is available in woodgrain embossed steel as well as smooth and woodgrain aluminum.

KLAUER CLASSIC

					
SNOW WHITE	EGG SHELL	PEARL*	SANDALWOOD	GOLDENROD	COTTAGE TAN*
					
OLIVE BRANCH	CARAMEL	SUNSET RED	BRICK RED	MOCCASIN	RATTAN
					
NORTHERN WOODS	WINTER SAGE	EMBER GRAY	MOUNTAIN GREEN	DEEP OCEAN BLUE	COLONIAL BLUE
					
LIBERTY GRAY	SILVER GRAY	CLOUDED MIST*	DUSTY CLAY	TERRA BRONZE	BROWNSTONE
					
GRAY WOLF	MOCHA	EBONY			

*Available only in aluminum soffit and aluminum soffit accessories.

ALUMINUM SOFFIT AND FASCIA COLLECTION

continued

KLAUER SELECT

					
WHITE	280 WHITE	CREAM	ALMOND	WHEAT	WICKER
					
HEATHER	NORWOOD	MEDIUM TAUPE	GREEN	TERITONE	BROWN
					
DARK BRONZE	MUSKET BROWN	BLACK			



The colors shown are intended only as an approximation of the actual colors. Color chips are available upon request.



KLAUER

Infinitely Reliable.

1185 Roosevelt Ext.
PO Box 59
Dubuque, IA 52004-0059

(563) 582.7201

smsales@klauer.com

WWW.KLAUER.COM

75958 Soffit Section

75961 Full Catalog

©2023 Klauer Manufacturing Company.