



KLAUER

MANUFACTURING CO.

ALUMINUM SOFFIT AND FASCIA
AND ACCESSORIES



ALUMINUM SOFFIT AND FASCIA

AND ACCESSORIES

WWW.KLAUER.COM

CONTENTS

ALUMINUM SOFFIT AND FASCIA
AND ACCESSORIES

› Aluminum Soffit Panels	4
› Aluminum Soffit Accessories	5
› T Roof Trim	6
› Aluminum Trim Coil	6
› Aluminum Fascia	7
› Steel Fascia	7
› Ring Shank Trim Nails	7
› Aluminum Soffit and Fascia Collection	8–9

OPTIONS
FOR EVERYONE

Serving the residential and light commercial markets, our durable, energy-efficient products are easy to install, require minimal maintenance and come in styles and colors to fit any project design.

THE KLAUER
ADVANTAGES



EASY INSTALLATION



MAINTENANCE FREE



DURABLE



ENERGY EFFICIENT



PRECISION ENGINEERED



ADD BEAUTY AND
VALUE TO YOUR HOME

QUALITY AND EXCELLENCE, REINVENTED
SOFFIT AND FASCIA

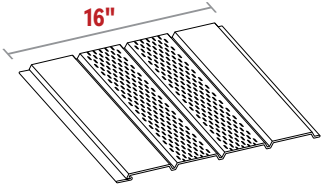
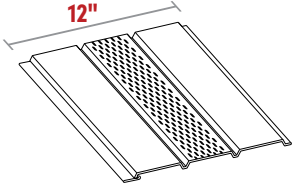
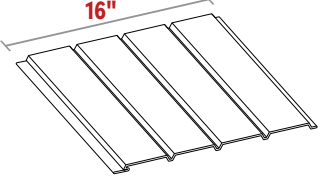
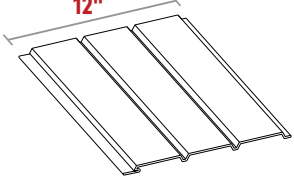
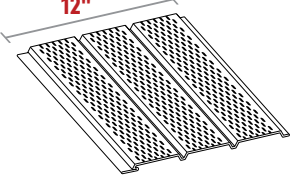
Klauer entered the aluminum soffit-manufacturing market with the goal of providing the highest-quality soffit and accessories available. Our paint is durable and tough, environmentally friendly, 100-percent recyclable and resistant to surface stains from the elements. Fascia is available in both aluminum and steel.



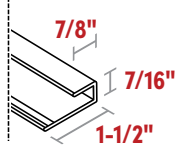
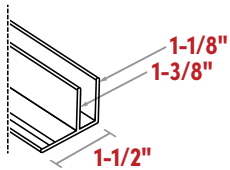
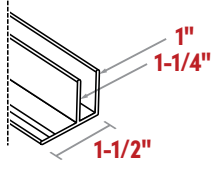
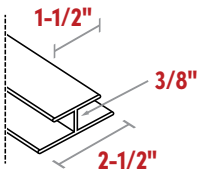
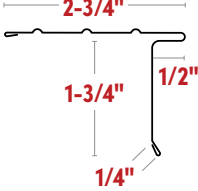
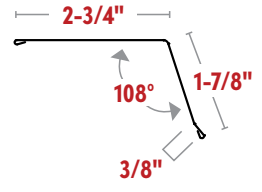
LIMITED-
LIFETIME
WARRANTY!

Quality products backed
by excellent support.

ALUMINUM SOFFIT PANELS

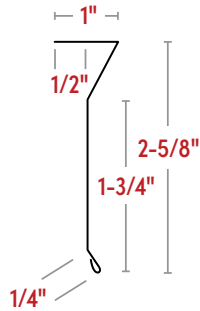
	PART NUMBER	PRODUCT DESCRIPTION	PACKAGING AND SPECIFICATIONS
	48350	16" Center-Vent Soffit Panel – 12' (free airspace: 6.48 sq. in./lin. ft.)	12 pcs./ctn. 4.44 lbs.
	48320	12" Center-Vent Soffit Panel – 12' (free airspace: 3.24 sq. in./lin. ft.)	16 pcs./ctn. 3.48 lbs.
	48330	16" Solid Soffit Panel – 12'	12 pcs./ctn. 4.44 lbs.
	48300	12" Solid Soffit Panel – 12'	16 pcs./ctn. 3.48 lbs.
	48340	16" Full-Vent Soffit Panel – 12' (free airspace: 12.96 sq. in./lin. ft.)	12 pcs./ctn. 4.44 lbs.
	48310	12" Full-Vent Soffit Panel – 12' (free airspace: 9.72 sq. in./lin. ft.)	16 pcs./ctn. 3.48 lbs.

ALUMINUM SOFFIT ACCESSORIES

	PART NUMBER	PRODUCT DESCRIPTION	PACKAGING AND SPECIFICATIONS
	48600	7/16" J Channel	12 ft. length 300 linear ft./ctn. 25 pcs./ctn. 18 lbs. .72 lbs./pc.
	48610	F Channel Soffit Starter Strip	12 ft. length 300 linear ft./ctn. 25 pcs./ctn. 36 lbs. 1.44 lbs./pc.
	48611	Universal F Channel Soffit Starter Strip	12 ft. length 300 linear ft./ctn. 25 pcs./ctn. 36 lbs. 1.44 lbs./pc.
	89680	Miter Divider	10 ft. length 100 linear ft./ctn. 10 pcs./ctn. 13.2 lbs. 1.32 lbs./pc.
	32548	5-1/2" Style SRLL Roof Edge with Hems	10 ft. length 500 linear ft./ctn. 50 pcs./ctn. 56.5 lbs. 1.13 lbs./pc.
	33008	2" x 3" Gutter Apron with Hems	10 ft. length 250 linear ft./ctn. 25 pcs./ctn. 25.5 lbs. 1.02 lbs./pc.

T ROOF TRIM

DIAGRAM 7-1



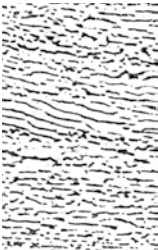
PRODUCT DESCRIPTION	PIECES PER	
	STEEL	ALUMINUM
T Roof Trim – 12'	N/A	25

Please see Roof Edge Product Directory for more information.

ALUMINUM TRIM COIL

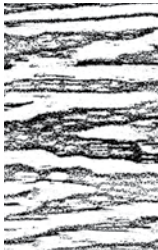


PART NUMBER	PRODUCT DESCRIPTION	PACKAGING AND SPECIFICATIONS
30232	24" Trim Coil – 50' Roll	1/ctn. 24 lbs.
30231	24" Trim Coil – 50' Roll Woodgrain Embossed	1/ctn. 24 lbs.



NORTHERN CEDAR
EMBOSSING PATTERN

- ALUMINUM SIDING ACCESSORIES
- ALUMINUM TRIM COIL (SEE ABOVE)

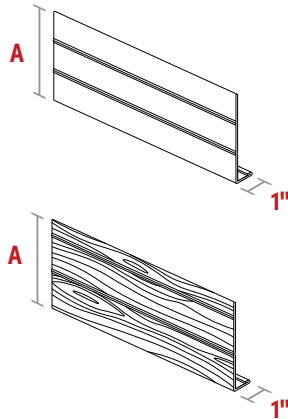


CYPRESS
EMBOSSING PATTERN

- STEEL FASCIA
- ALUMINUM FASCIA (SEE BELOW)

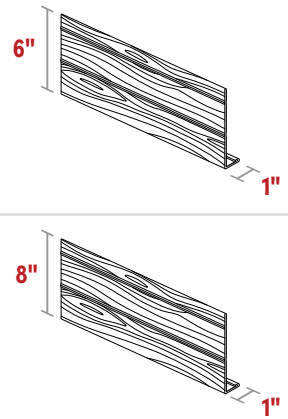
ALUMINUM FASCIA

continued



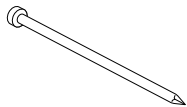
PART NUMBER	PRODUCT DESCRIPTION	PACKAGING AND SPECIFICATIONS	DIMENSIONS A
48490	6" Fascia (.024) Smooth Fascia Cover – 12'	25 pcs./ctn. 1.80 lbs.	5-5/8"
48500	8" Fascia (.024) Smooth Fascia Cover – 12'	25 pcs./ctn. 2.64 lbs.	7-5/8"
48560	6" Fascia (.024) Woodgrain Fascia Cover – 12'	25 pcs./ctn. 1.80 lbs.	5-5/8"
48570	8" Fascia (.024) Woodgrain Fascia Cover – 12'	25 pcs./ctn. 2.64 lbs.	7-5/8"

STEEL FASCIA



PART NUMBER	PRODUCT DESCRIPTION	PACKAGING AND SPECIFICATIONS
57010	6" Steel Woodgrain Fascia	12 ft. length 120 linear ft./ctn. 10 pcs./ctn. 48 lbs. 4.8 lbs./pc.
57020	8" Steel Woodgrain Fascia	12 ft. length 120 linear ft./ctn. 10 pcs./ctn. 60 lbs. 6.0 lbs./pc.

RING SHANK TRIM NAILS



PART NUMBER	PRODUCT DESCRIPTION	PACKAGING AND SPECIFICATIONS
48650	1-1/4" Stainless-Steel Trim Nail	1 lb./ctn.

ALUMINUM SOFFIT AND FASCIA COLLECTION

Klauer utilizes a proprietary, durable paint system available in a textured or smooth finish and a wide range of colors. Center vent, full vent and solid soffit panels are available in standard 12-in. and 16-in. widths. Fascia is available in woodgrain embossed steel as well as smooth and woodgrain aluminum.

KLAUER CLASSIC

					
SNOW WHITE	EGG SHELL	PEARL*	SANDALWOOD	GOLDENROD	COTTAGE TAN*
					
OLIVE BRANCH	CARAMEL	SUNSET RED	BRICK RED	MOCCASIN	RATTAN
					
NORTHERN WOODS	WINTER SAGE	EMBER GRAY	MOUNTAIN GREEN	DEEP OCEAN BLUE	COLONIAL BLUE
					
LIBERTY GRAY	SILVER GRAY	CLOUDED MIST*	DUSTY CLAY	TERRA BRONZE	BROWNSTONE
					
GRAY WOLF	MOCHA	EBONY			

*Available only in aluminum soffit and aluminum soffit accessories.

ALUMINUM SOFFIT AND FASCIA COLLECTION

continued

KLAUER SELECT

					
WHITE	280 WHITE	PECAN	CREAM	ALMOND	WHEAT
					
WICKER	HEATHER	NORWOOD	CLAY	GREEN	TERITONE
					
SMOOTH SILVER GRAY	SMOOTH LIBERTY GRAY	SMOOTH MOCHA	BROWN	DARK BRONZE	MUSKET BROWN
					
BLACK					



The colors shown are intended only as an approximation of the actual colors. Color chips are available upon request.



KLAUER

MANUFACTURING CO.

**Adding Strength
to Every Foundation.**

1185 Roosevelt Ext.
Dubuque, IA 52001

(563) 582.7201

smsales@klauer.com

WWW.KLAUER.COM

75958 Soffit Section

75961 Full Catalog

©2024 Klauer Manufacturing Company.