



ALUMINUM SOFFIT AND FASCIA
AND ACCESSORIES

ALUMINUM SOFFIT AND FASCIA

AND ACCESSORIES

WWW.KLAUER.COM

CONTENTS

ALUMINUM SOFFIT AND FASCIA AND ACCESSORIES

- › Aluminum Soffit Panels 4
- › Aluminum Soffit J and F Channel and Miter Divider 5
- › Aluminum Trim Coil 6
- › Aluminum Fascia 6
- › Steel Fascia 7
- › Trim Nails 7
- › Aluminum Soffit and Fascia Collection 8

OPTIONS FOR EVERYONE

Serving the residential and light commercial markets, our durable, energy-efficient products are easy to install, require minimal maintenance and come in styles and colors to fit any project design.



QUALITY AND EXCELLENCE, REINVENTED SOFFIT AND FASCIA

Klauer entered the aluminum soffit-manufacturing market with the goal of providing the highest-quality soffit and accessories available. Our paint is durable and tough, environmentally friendly, 100-percent recyclable and resistant to surface stains from the elements. Fascia is available in both aluminum and steel.



LIMITED-LIFETIME WARRANTY!

Quality products backed by excellent support.

THE KLAUER ADVANTAGES



EASY INSTALLATION



MAINTENANCE FREE



DURABLE



ENERGY EFFICIENT

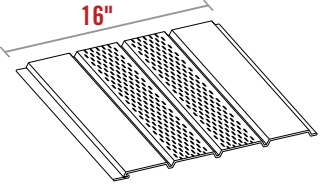
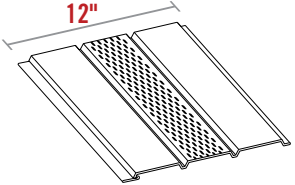
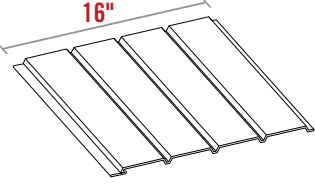
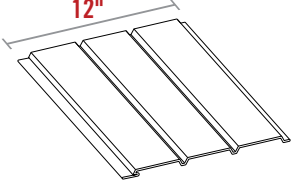
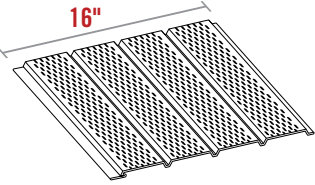



PRECISION ENGINEERED

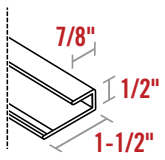
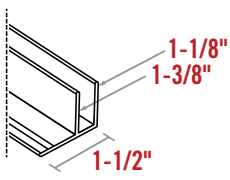
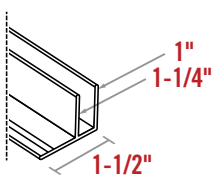
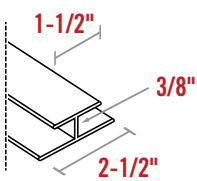


ADD BEAUTY AND VALUE TO YOUR HOME

ALUMINUM SOFFIT PANELS

	PRODUCT DESCRIPTION	PACKAGING AND SPECIFICATIONS
	16" Center-Vent Soffit Panel – 12' (free airspace: 6.48 sq. in./lin. ft.)	12 pcs./ctn. 4.44 lbs.
	12" Center-Vent Soffit Panel – 12' (free airspace: 3.24 sq. in./lin. ft.)	16 pcs./ctn. 3.48 lbs.
	16" Solid Soffit Panel – 12'	12 pcs./ctn. 4.44 lbs.
	12" Solid Soffit Panel – 12'	16 pcs./ctn. 3.48 lbs.
	16" Full-Vent Soffit Panel – 12' (free airspace: 12.96 sq. in./lin. ft.)	12 pcs./ctn. 4.44 lbs.
	12" Full-Vent Soffit Panel – 12' (free airspace: 9.72 sq. in./lin. ft.)	16 pcs./ctn. 3.48 lbs.

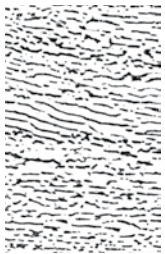
ALUMINUM SOFFIT J AND F CHANNEL AND MITER DIVIDER

	PRODUCT DESCRIPTION	PACKAGING AND SPECIFICATIONS
	J Channel	12 ft. length 300 linear ft./ctn. 25 pcs./ctn. 18 lbs.
	F Channel Soffit Starter Strip	12 ft. length 300 linear ft./ctn. 25 pcs./ctn. 36 lbs.
	Universal F Channel Soffit Starter Strip	12 ft. length 300 linear ft./ctn. 25 pcs./ctn. 36 lbs.
	Miter Divider	10 ft. length 100 linear ft./ctn. 10 pcs./ctn. 13.2 lbs.

ALUMINUM TRIM COIL

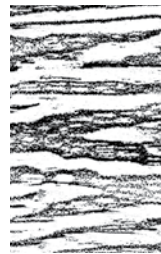


PRODUCT DESCRIPTION	PACKAGING AND SPECIFICATIONS
24" Trim Coil – 50' Roll	1/ctn. 24 lbs.
24" Trim Coil – 50' Roll Woodgrain Embossed	1/ctn. 24 lbs.



NORTHERN CEDAR EMBOSSING PATTERN

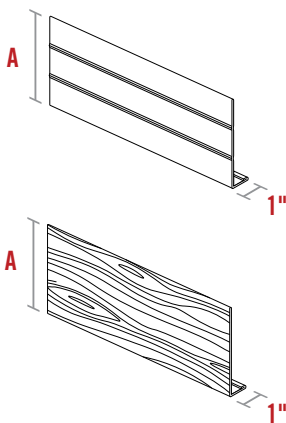
- ALUMINUM SIDING ACCESSORIES
- ALUMINUM TRIM COIL (SEE ABOVE)



CYPRESS EMBOSSING PATTERN

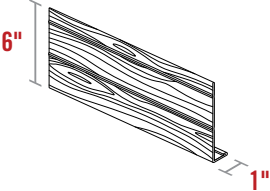
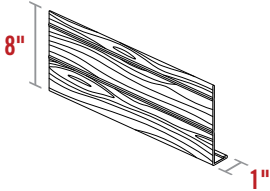
- STEEL FASCIA
- ALUMINUM FASCIA (SEE BELOW)

ALUMINUM FASCIA

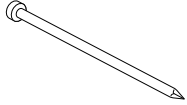


PRODUCT DESCRIPTION	PACKAGING AND SPECIFICATIONS	DIMENSIONS A
6" Fascia (.024) Smooth Fascia Cover – 12'	25 pcs./ctn. 1.80 lbs.	5-5/8"
8" Fascia (.024) Smooth Fascia Cover – 12'	25 pcs./ctn. 2.64 lbs.	7-5/8"
6" Fascia (.024) Woodgrain Fascia Cover – 12'	25 pcs./ctn. 1.80 lbs.	5-5/8"
8" Fascia (.024) Woodgrain Fascia Cover – 12'	25 pcs./ctn. 2.64 lbs.	7-5/8"

STEEL FASCIA

	PRODUCT DESCRIPTION	PACKAGING AND SPECIFICATIONS
	6" Steel Woodgrain Fascia	12 ft. length 120 linear ft./ctn. 10 pcs./ctn. 48 lbs.
	8" Steel Woodgrain Fascia	12 ft. length 120 linear ft./ctn. 10 pcs./ctn. 60 lbs.

TRIM NAILS

	PRODUCT DESCRIPTION	PACKAGING AND SPECIFICATIONS
	1-1/4" Stainless-Steel Trim Nail	1 lb./ctn.

ALUMINUM SOFFIT AND FASCIA COLLECTION

Klauer utilizes a proprietary, durable paint system available in a textured or smooth finish and a wide range of colors. Center vent, full vent and solid soffit panels are available in standard 12-in. and 16-in. widths. Fascia is available in woodgrain embossed steel as well as smooth and woodgrain aluminum.

KLAUER CLASSIC



KLAUER SELECT



Dura Coat
PERFORMANCE FINISHES
 An Avallta Coating Systems Company

The colors shown are intended only as an approximation of the actual colors. Color chips are available upon request.



1185 Roosevelt Ext.
PO Box 59
Dubuque, IA 52004-0059
(563) 582.7201
smsales@klauer.com

WWW.KLAUER.COM

75958 Soffit Section
75961 Full Catalog

©2021 Klauer Manufacturing Company.